



# Sustainable Transport

## A Local Authority Perspective

Patrick Nally  
Westmeath County Council  
9<sup>th</sup> April 2024



## National Policies & Plans

- **Project Ireland 2040: National Planning Framework 2040**
- **Project Ireland 2040: National Development Plan 2021 – 2030**
- **National Climate Action Plans 2019, 2021 & 2023**
- **National Investment Framework for Transport in Ireland 2021 (NIFTI)**
- **National Sustainable Mobility Policy 2022**
- **Cycle Design Manual, 2023**
- **Design Manual for Urban Roads and Streets (DMURS)**
- **Cycle Connects: Irelands Cycle Network (at Public Consultation)**

## Regional Policies & Plans

- **Regional Spatial and Economic Strategy (RSES) 2019-2031 (Eastern & Midland Region)**

## Local Policies & Plans

- **Westmeath County Development Plan 2021-2027**
- **Athlone Joint Urban Area Plan (in preparation)**
- **Mullingar Local Area Plan (in preparation)**
- **Westmeath County Council Draft Climate Action Plan 2024-2029**

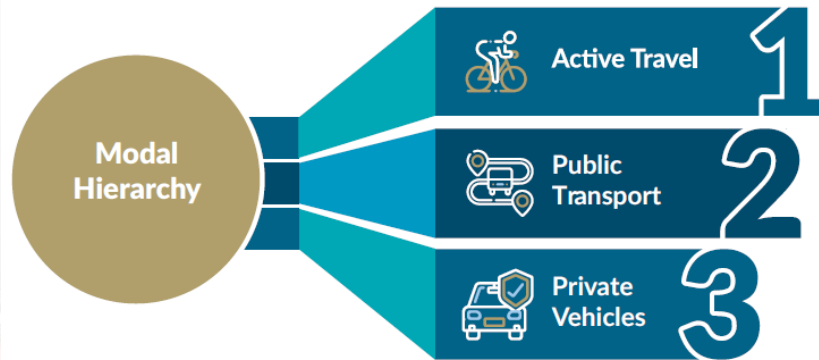
## National Investment Framework for Transport in Ireland 2021 (NIFTI)

- Sets out clear principles for the consideration of future transport investment.
- Ensures that the appropriate balance is struck between the protection and renewal of our existing transport assets and the development of new infrastructure.
- A key objective is to protect and renew existing transport assets to safeguard the value of past investment
- NIFTI sets out four strategic investment priorities all of which have equal weighting:
  - Decarbonisation
  - Protection and Renewal
  - Mobility of People and Goods in Urban Areas
  - Enhanced Regional and Rural Connectivity



## National Investment Framework for Transport in Ireland 2021 (NIFTI)

Options development for routes follow the NIFTI modal & intervention hierarchies as below



**Modal Hierarchy** – Sets out a hierarchy of travel modes to be accommodated and encouraged when investments are made.

**Intervention Hierarchy** – Sets out to ensure that investment is proportionate to the problem identified and aims to make the best use of existing assets.

Images courtesy of National Investment Framework for Transport in Ireland



## National Sustainable Mobility Policy 2022

### Publication was an action under Climate Action Plan 2021

One of the Actions in the Policy:

- Develop and implement an **Active Travel Infrastructure Programme** for regional growth centres and key towns outside of the Greater Dublin Area.



Hierarchy of Road Users model

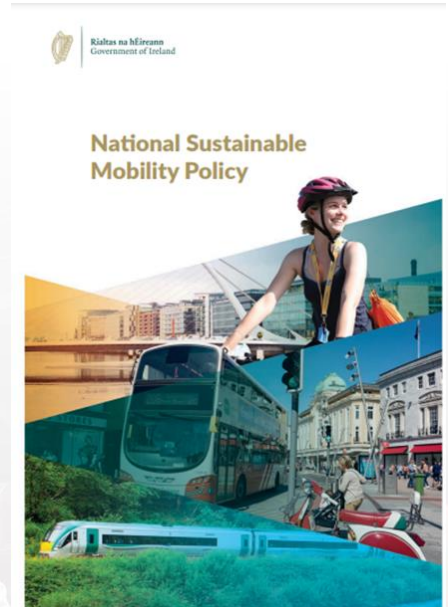


Image courtesy of National Sustainable Mobility Policy

## Climate Action Plan 2023

- **The Climate Action Plan 2023 (CAP23) is the second annual update to Ireland's Climate Action Plan 2019**
- **20% reduction in total vehicle kilometres and significant increases in sustainable transport trips and modal share.**
- **50% increase in daily active travel journeys**

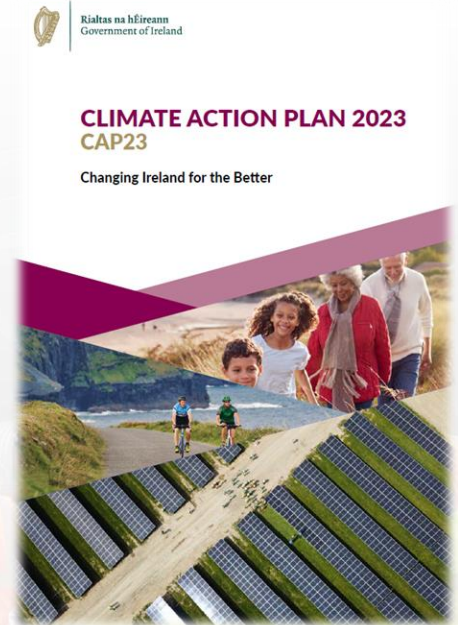


Image courtesy of CAP23

## Climate Action Plan 2023 – Principles for Change

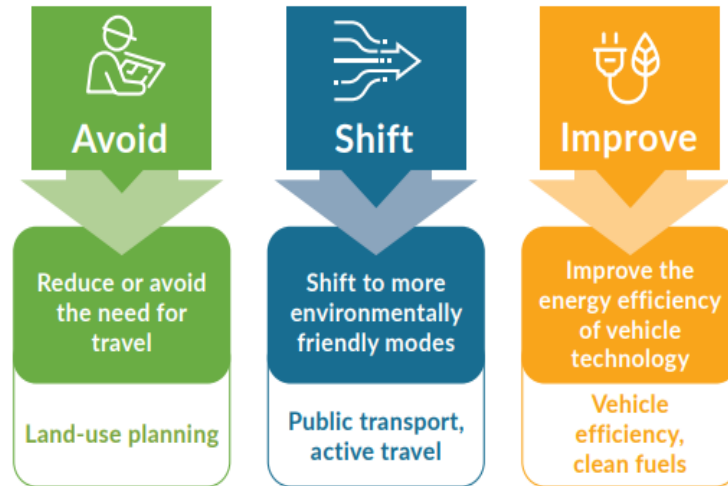


Image courtesy of CAP23

- Develop our services, communities and infrastructure in such a manner as to **AVOID** the need to travel as much as we do today.
- Enhance the relative attractiveness of sustainable travel modes to encourage a **SHIFT** away from private car use.
- **IMPROVE** the efficiency of residual vehicle based movements e.g. through electrification and use of biofuels as transitional measures.



## Climate Action Plan 2023 – Key Measures and Actions to Deliver Abatement in Transport which relate to Active Travel

### Avoid + Shift

- Road Space Reallocation
  - DoT & NTA to support Local Authorities in accelerated delivery of the **Pathfinder Programme**, a series of exemplar demonstrator projects.
  - Identify roads and streets for Road Space Reallocation.
  - Guidelines for Local Authority Climate Action Plans to include specific actions and indicators in respect of accessibility, modal shift and active travel.
  - Review of road traffic policy and legislation to prioritise the safety of walking and cycling.

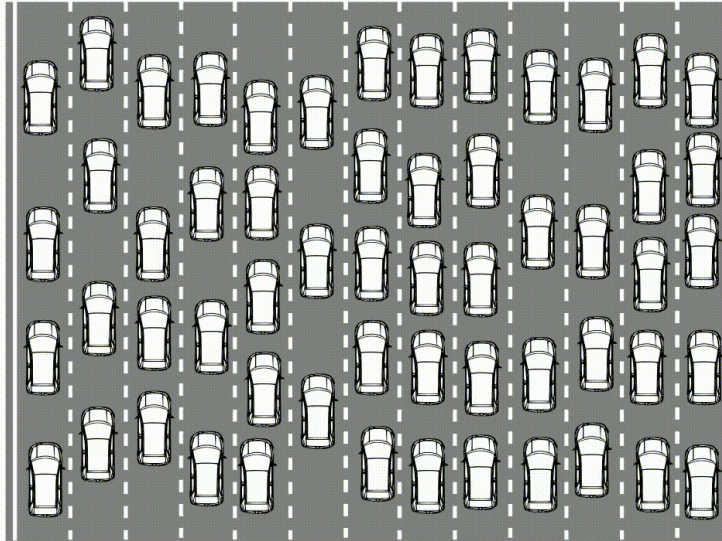
## Climate Action Plan 2023 – Key Measures and Actions to Deliver Abatement in Transport which relate to Active Travel

### Shift

- Active Travel Infrastructure Programme
  - Advance the roll-out of 1,000km of walking/cycling infrastructure nationally
  - Advance the roll-out of National Cycle and Greenway Networks
  - Provide safe and high-quality active travel infrastructure to significantly increase the scope for active travel to become a default mode of mobility
  - A dedicated team in each Local Authority to expand walking and cycling facilities

## Road Space Reallocation

### **SCHRODINGERS ROAD SPACE**



**TAKING AWAY SPACE FROM CARS WHILE  
GIVING THEM MORE SPACE AT THE SAME TIME**

21st  
Century  
City



## Active Travel, What is it?

The Dept. of Transport defines Active Travel as ‘travelling with a purpose, using your own energy’

- Core Principles for Active Travel Infrastructure:
  - Convenient
  - Safe
  - Universal





## Active Travel – Food for Thought





## Active Travel Investment Programme

- **Budget for 2024 is €290m**
- **Funded by the Department of Transport (DoT)**
- **Overall programme managed by a dedicated Active Travel team in the National Transport Authority (NTA)**
- **Individual projects managed and delivered by Local Authorities**
- **Projects include segregated cycle lanes, widened footpaths, new walking and cycling bridges, new pedestrian crossings etc.**
- **Programme is underpinned by the aims and objectives set out in the Government's Climate Action Plan, of which one of the key aims is to increase the number of walking and cycling networks so that walking, cycling and public transport will account for 50% of all journeys made by 2030.**

## NTA Role for Active Travel Projects



- Since 2021, the NTA's Approving Authority role in urban centres was extended to the financing and construction of active travel projects developed by Local Authorities throughout the country, other than Greenway projects.
- The NTA is responsible for funding and securing the delivery of Urban Greenways. Urban Greenways are identifiable as having a high commuting function in addition to recreational and amenity use.
- The NTA works in partnership with TII, and the Local Authorities, on coordinating and delivering major rural Active Travel and Greenway projects, in a manner that is coherent with those in urban areas.



## Segregated Footpath/Cycleway: Ardmore Road, Mullingar





## “CIE Road”, Moate



Upgraded of surface and installed public lighting to provide shared facility linking residential areas with schools, town centre & amenities

## Low-Cost Permeability Measures: Love Lane, Athlone



Before



After



## Low-Cost Junction Tightening: Ballymore



Before



After

## Cycle Parking: Feedback from Schools



90 Schools in Westmeath contacted directly, 40 expressed an interest in, and were supplied with, cycle racks & shelters

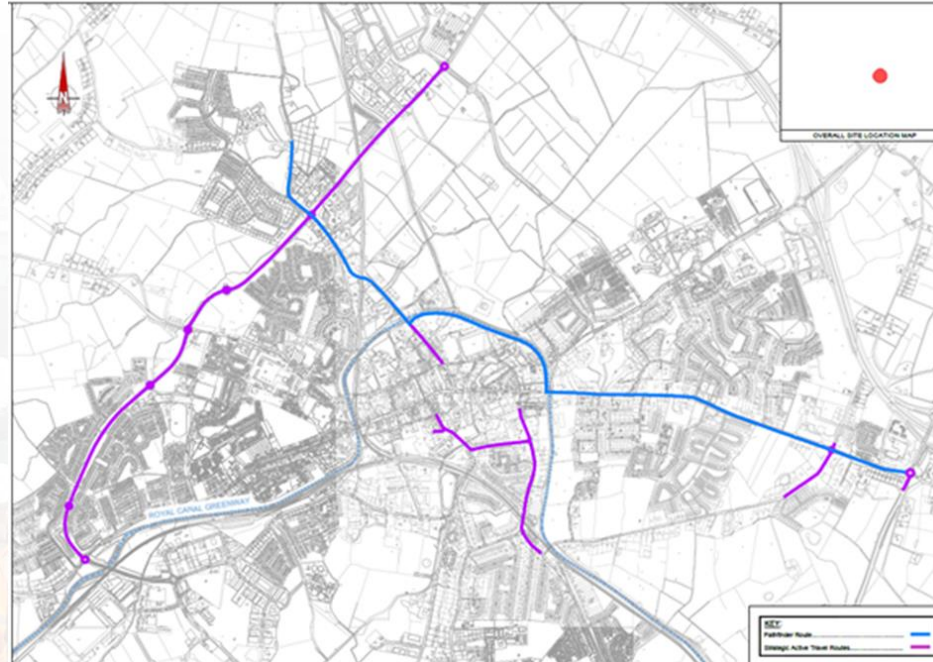
## Pedestrian & Cycleway Bridge @ Saunders Bridge



Construction tender in Q2 2024

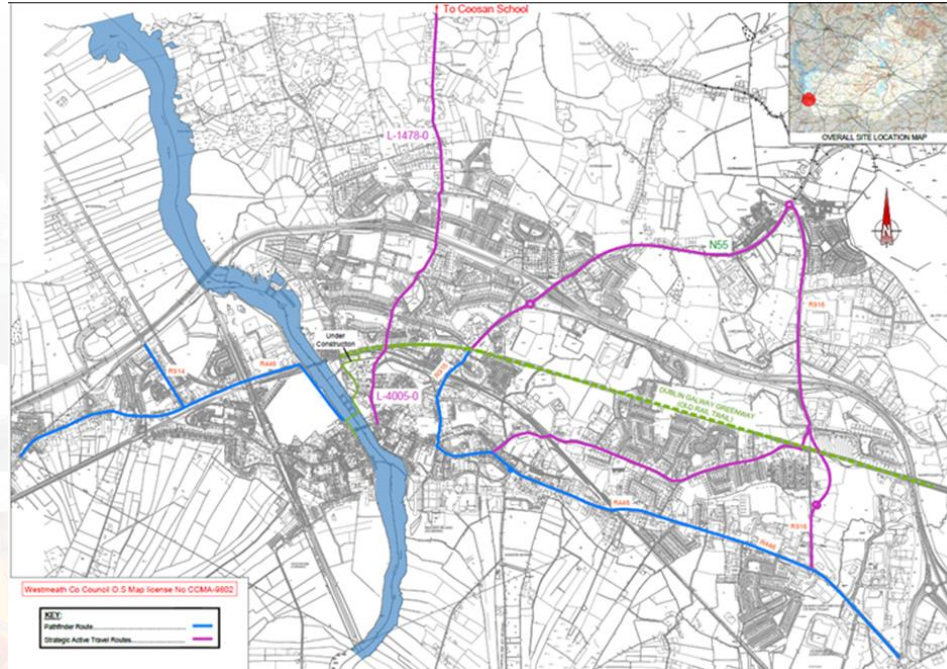


## Mullingar: 6 Strategic Active Travel Schemes



- Part 8 Planning for Pathfinder project in Q3 2024
- Part 8 Planning for remaining schemes in Q4 2024

## Athlone: 6 Strategic Active Travel Schemes



- Part 8 Planning for Pathfinder project in Q3 2024
- Part 8 Planning for remaining schemes in Q4 2024



## Safe Routes to School (SRTS) Programme

- Programme is an initiative of the Dept. of Transport supported by the Dept. of Education
- An Taisce Green-Schools coordinates the Programme
- A dedicated Infrastructure Officer works with Schools & Local Authority to produce an Outline Delivery Plan for each School
- 11 schools in Westmeath completed the Expression of Interest form in 2021



### Draft Delivery Plan Scoil Chroí Naofa

Rochfortbridge,  
Co. Westmeath  
N91 CP38  
Roll Number: 20439i



### Draft Delivery Plan St. Joseph's Secondary School

Castlelost Road  
Rochfortbridge  
N91 XV56  
Roll Number: 63310T



### Outline Delivery Plan Scoil an Chlochair

Dublin Road,  
Kilbeggan, Co. Westmeath  
N91 FY53  
Roll Number: 20063M



### Outline Delivery Plan Athlone Community College

Retreat Road,  
Athlone, Westmeath  
N37 Y985  
Roll Number: 71410T



## Westmeath County Council Other Programmes with the NTA



**New Bus Shelters in Clonbrusk, Athlone and Rochfortbridge**



# TRA

TRANSPORT RESEARCH ARENA

## DUBLIN 2024

10<sup>th</sup> CONFERENCE • 15-18 April

*Transport Transitions: Advancing Sustainable  
and Inclusive Mobility*