



Innovation In Surface Dressing Equipment

Alan Anderson MEng, BSc, BEng, AEng MIEI, MIAT



WE OPEN THE WAY

Introduction

What is Surface Dressing?

Surface dressing, also known as chip seal in some parts of the world, is a road maintenance technique that involves applying a layer of bituminous binder followed by a layer of aggregate to the road surface.

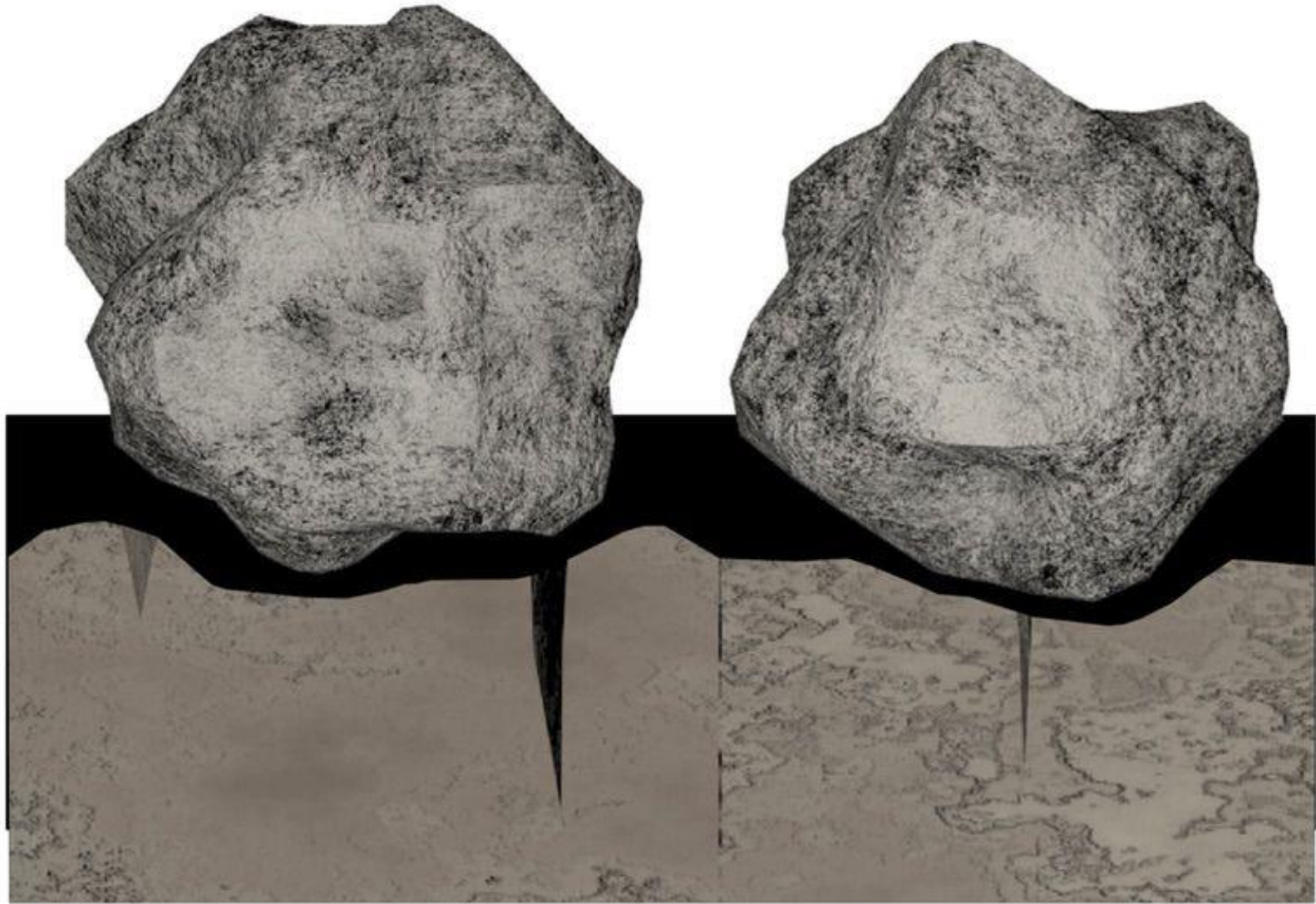
This method is widely used in Ireland and Europe for extending the life of road pavements. The technology and equipment used in surface dressing have evolved significantly over the past 50 years, driven by advances in materials science, engineering, and environmental considerations.

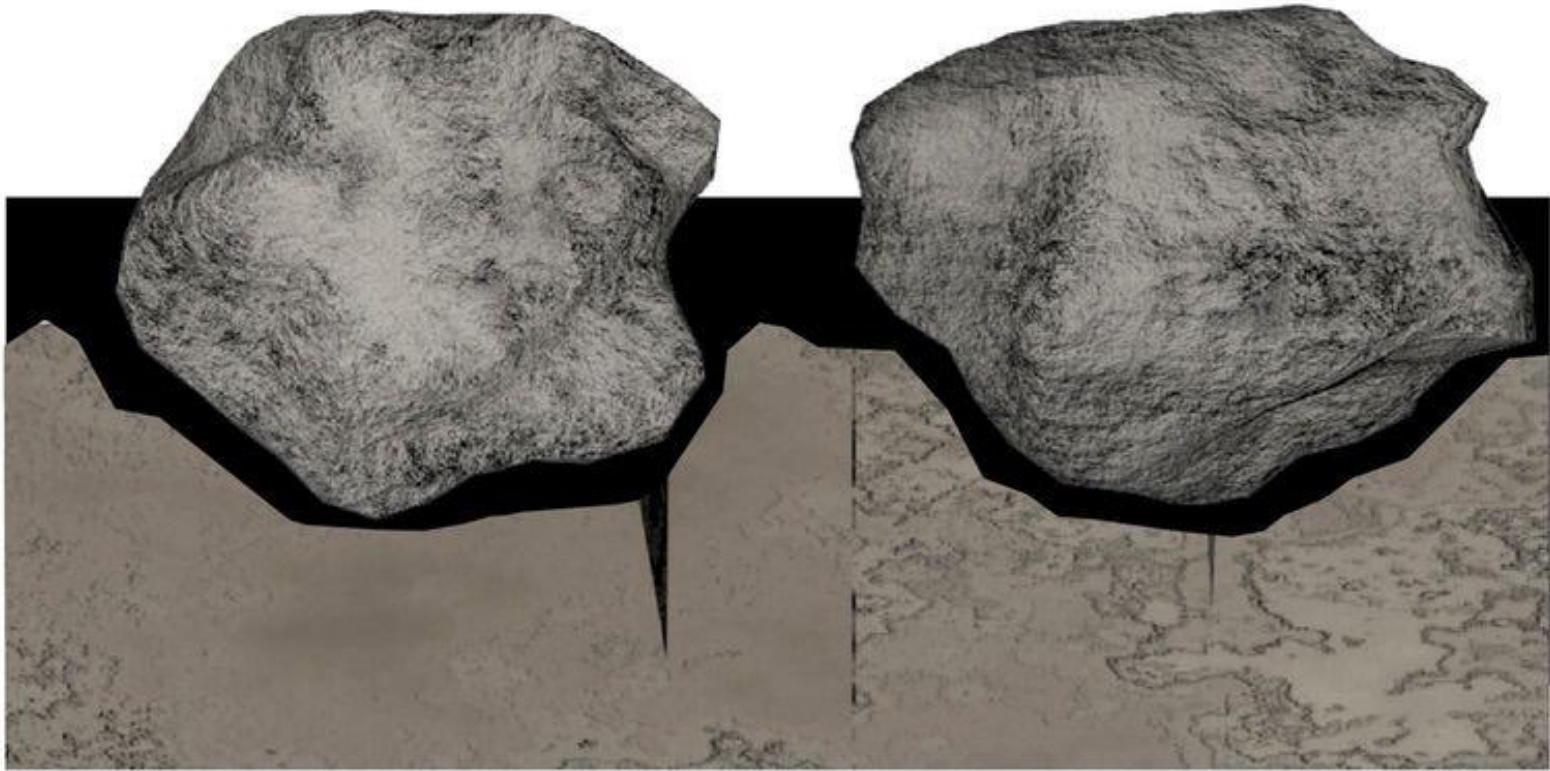




211-G-3243

BOMAG
ROAD GROUP

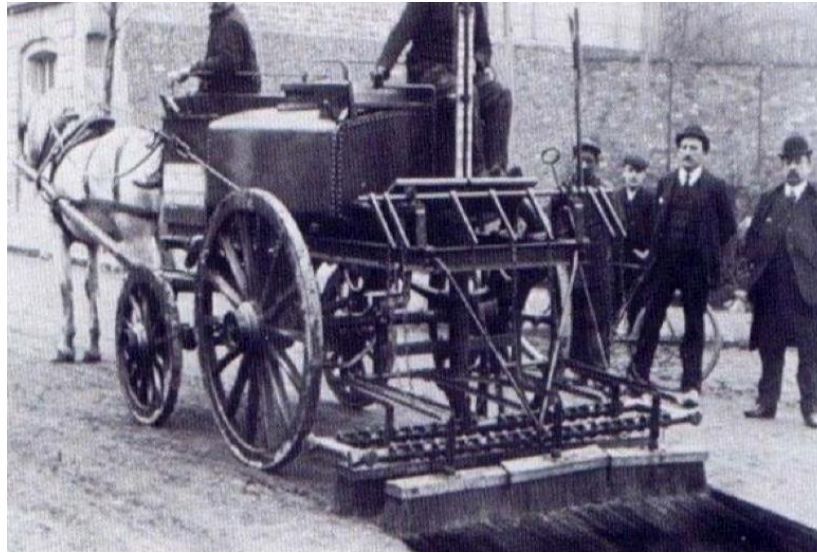






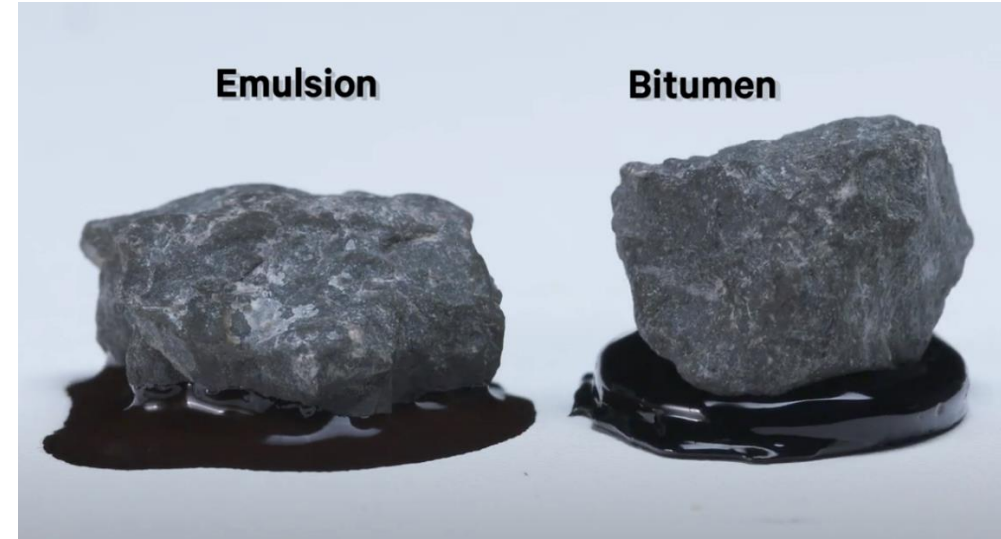
Evolution of Surface Dressing Equipment

1920s-1980s



- Basic Mechanical Spreaders
- Manual Labour Intensive

1920s-1980s



- Basic Mechanical Spreaders
- Manual Labour Intensive
- First Generations of Bitumen Emulsions

1990s



- Introduction of Computer-Controlled Spraying

1990s



- Introduction of Computer-Controlled Spraying
- Self-Propelled Chipping Spreaders

2000s



- **Integrated Surface Dressing Units**



2000s



- **Integrated Surface Dressing Units**
- **Automated spraybar controls - Single operator**

2000s



- Integrated Surface Dressing Units
- Automated spraybar controls - Single operator
- First edition IAT guidelines published



2010s - Present



SURFACE DRESSING

Rolling
Floor
Gritter

The logo for COLAS, featuring the word "COLAS" in a bold, black, sans-serif font inside a yellow diamond shape with a black outline. The diamond is slightly tilted to the right.

COLAS

COMBI SURFACE DRESSING

Self Contained
Road Surfacing
Solution

COLAS



2010s - Present



OB VARIO SURFACE DRESSING

Self Contained
Road Surfacing
Solution

The logo consists of a yellow diamond shape with the word "COLAS" in black capital letters inside. To the right of the diamond are three parallel yellow lines that taper to the right, suggesting a road surface or a stylized arrow.

COLAS

● 2010s - Present



SURFACE DRESSING

Front
Gritter

The logo for COLAS, featuring the word "COLAS" in a bold, black, sans-serif font centered within a yellow diamond shape. The diamond is composed of multiple parallel lines, creating a sense of depth and movement.

COLAS

Fibremat



Fibremat



Surface Dressing (Fibremat)

Fibremat
Improves Tensile
Strength and Reduces
Reflective Cracking

COLAS



Road Surveys

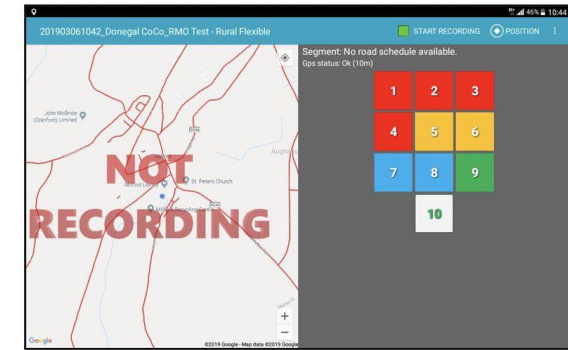
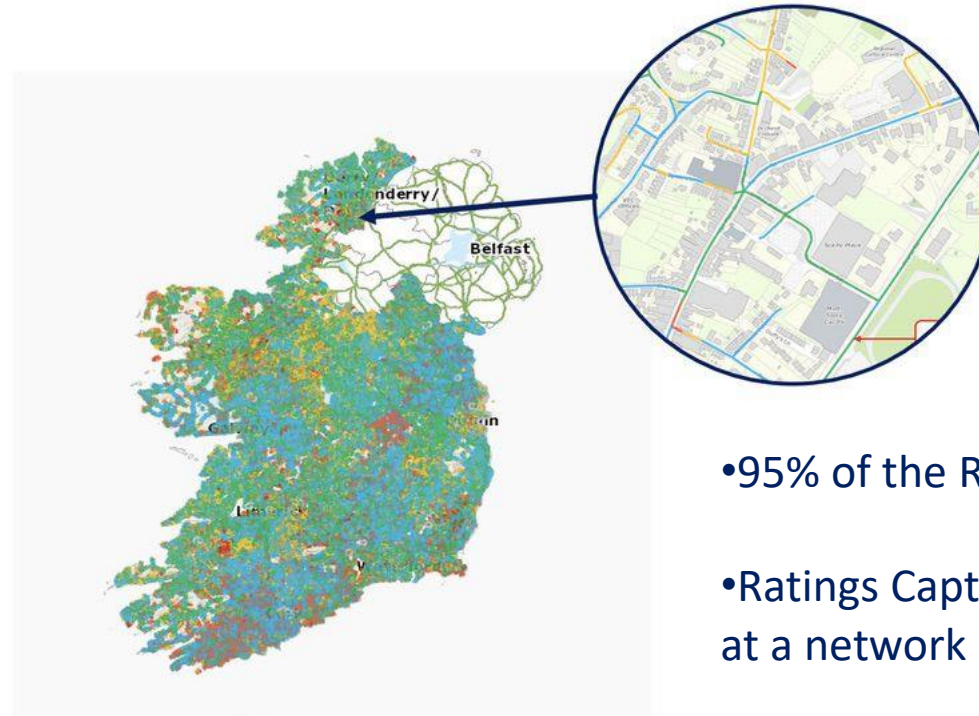


Users collect data in the field using a range of Apps

- PSCI Condition Rating App
- Works App (Record Projects)
- Surface Inventory App (Record surface of road)
- Speed Limits App (Record location of Speed Limit Signs)
- Bridges App (Carryout Visual Inspections)
- Footways App (Record Hazards and Condition of Footways)
- Public Lighting App (Record lights and condition rating)



Road Surveys



- 95% of the Road Network has a valid PSCI Rating
- Ratings Captured by Local Authorities via the PSCI App, at a network level and the Works App at a project level.
- Local Authorities are allocated a PSCI Grant to in sure the Network is up to date (Valid PSCI rating in accordance with the Pavement Survey Standard



PSCI App



Works App

Surface Dressing India



Surface Dressing India



Jim Campbell



**Thank you for your attention
Any questions?**

Alan Anderson MEng, BSc, BEng, AEng MIEI, MIAT



WE OPEN THE WAY